

# Two Bedroom Classic With Sunroom

Residential Living | Two bedroom, Two bathroom | 1034 sq. ft.

Residence Number \_\_\_\_\_

Quote Expiration Date \_\_\_\_\_

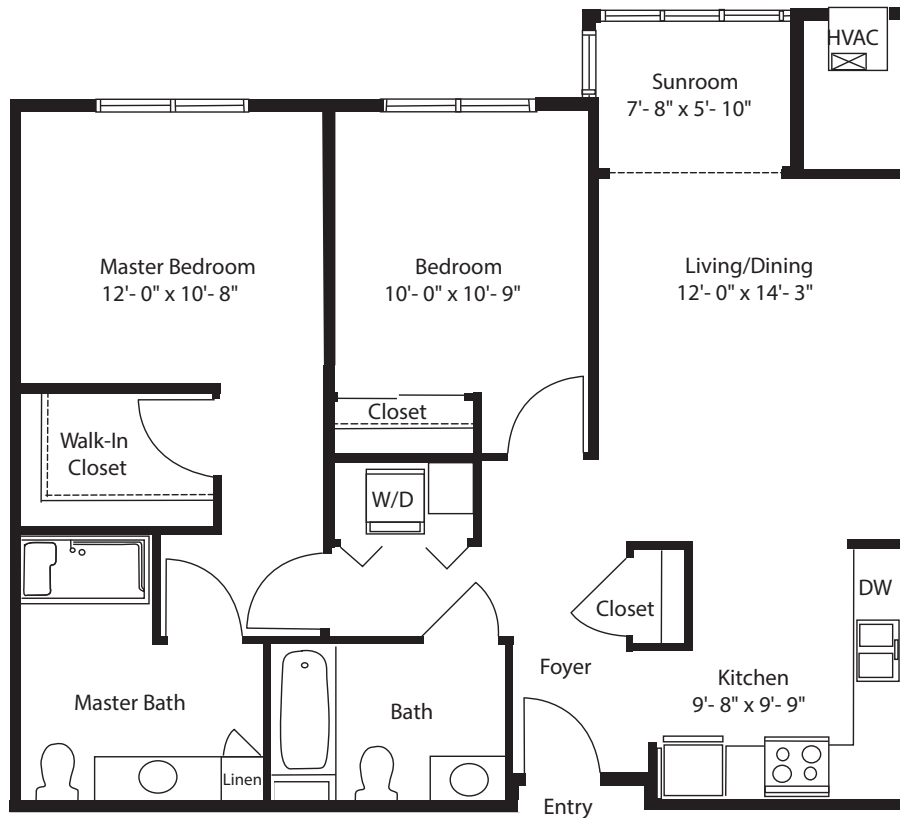
Base Entrance Fee \_\_\_\_\_

Salesperson Initials \_\_\_\_\_

Total Entrance Fee \_\_\_\_\_

Prospective Resident Initials \_\_\_\_\_

Monthly Fee \_\_\_\_\_



Standard plan. Actual dimensions may vary slightly.

To learn more, visit [LutherOaks.org](https://www.LutherOaks.org) or call (309) 557-8000 to schedule an appointment.



601 Lutz Road, Bloomington, IL 61704

Empowering vibrant, *Grace-Filled Living* across all generations.

